

**DISCIPLINARY HANDBOOK**

**6 April 2009**

## **Contents**

### **MWFA Process of Appeal and Jurisdiction - Flow chart**

#### **Judiciary Committee**

Disciplinary Judiciary Committee Regulations

Judiciary Process

Send Off Report

Caution Report

Incident Report

MWFA Summary of Send-Off Categories

#### **Protest and Disputes Committee**

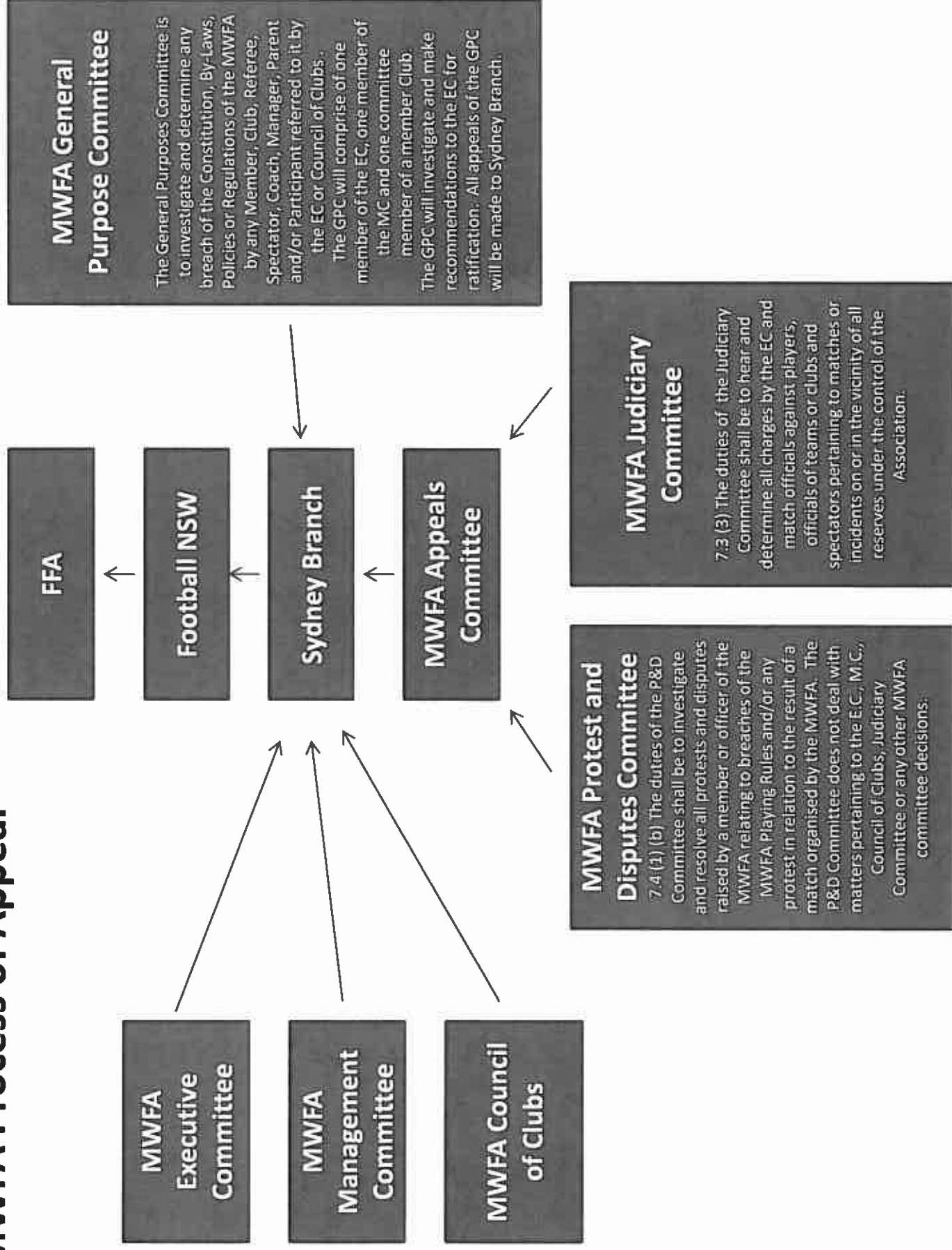
Protest and Dispute Form

Protest and Dispute Process

Protest and Dispute Penalties

Rules for Checking ID Cards

# MWFA Process of Appeal



## **SECTION 6**

### **DISCIPLINARY JUDICIARY COMMITTEE**

#### **DISCIPLINARY COMMITTEE APPOINTMENTS**

- 6.1 The MWFA AGM will appoint a Disciplinary Committee consisting of four members which shall hold office for a term of twelve (12) months from the date of appointment.
- 6.2 A member of the Disciplinary Committee shall not arbitrate on matters involving a member of his own Club.
- 6.3 Quorum for the Disciplinary Committee shall be two (2).
- 6.4 The Committee shall meet at least once a week, if required, during the playing season, at a time and place to be determined by the Executive.
- 6.5 For the purpose of defining suspensions, competition fixtures shall be deemed to be any premiership competition fixture or play-off and any cup-tie fixture or play off actually controlled or organised by MWFA that the suspended parties' team actually participates in.
- 6.6 Suspensions and penalties of the Disciplinary Committee of MWFA shall also apply to any player; person or official registered within its jurisdiction whose team by seeking to play in a competition recognised by MWFA although not necessarily under its direct control.

#### **6.7 PLAYERS SENT OFF**

A player shall be sent from the field for the following offences as prescribed for in the laws of the game;

- R1 The player is guilty of serious foul play
- R2 The player is guilty of violent conduct
- R3 The player spits at an opponent or any other person
- R4 The player denies the opposing team a goal or an obvious goal scoring opportunity by deliberately handling the ball (this does not apply to a goal keeper within his or her own penalty area)

- R5 The player denies an obvious goal scoring opportunity to an opponent moving towards the player's goal by an offence punishable by a free kick or a penalty kick.
- R6 The player uses offensive or insulting or abusive language and/or gestures
- R7 The player receives a second caution in the same match

*For the purpose of these Regulations, reference to a player during a match includes a substitute and a substituted player.*

- (a) Players sent from the field shall incur a minimum one (1) match suspension and is not subject to challenge, appeal or waiver by the Disciplinary Committee.
- (b) All clubs whose players are dismissed from the field of play are required to follow these directions:
- (i) Offences with a more than the minimum of one fixture penalty have two options:-
    - (a) Accept the penalty as stipulated, or
    - (b) Challenge the penalty, and if the player is found guilty he/she will be subject to a penalty greater than the minimum by one or more fixtures up to the maximum number of fixtures as prescribed in the Regulations.
  - (ii) In the event that a player challenges a determination by the Disciplinary Committee above the minimum sentence, the player is required to stand down until the challenge is heard.
  - (iii) If a player fails to attend the Disciplinary Committee meeting his/her hearing will be dismissed.
  - (iv) Players may no later than twenty four (24) hours prior to the hearing inform MWFA in writing that they consent to the matter being heard ex-parte and submit written evidence in support of their defence or in mitigation of penalty.
  - (v) Clubs shall be notified prior to the commencement of the season of the meeting day and place for the Disciplinary Committee.
  - (vi) Players shall be deemed to have received notice from the club as to the meeting day of the Disciplinary Committee.

(c) Persons summoned to appear before the Disciplinary Committee shall be suspended until such time that they appear.

6.8 In cases of emergency the Disciplinary Committee shall meet at short notice to hear cases of players sent off in mid-week fixtures. In such cases players and Referees shall receive 48 hours notice to be in attendance.

6.9 Players failing to appear before the Disciplinary Committee when requested to do so will be considered suspended from playing until such time as their matter is dealt with by the said Committee.

(a) Players sent from the field and who do not attend the Disciplinary Committee as required, will receive a letter to attend a further Disciplinary Committee Meeting. Such players are suspended from taking part in any games in the meantime or until such time that the sentence has been served as specified in the Regulations. If such a player fails to attend this rescheduled meeting, the matter will be dealt with in their absence.

#### 6.10 **PLAYERS DISMISSED FROM THE FIELD OF PLAY**

A player who has been sent from the field will not participate in another match on the same day.

#### 6.11 **SUSPENDED PLAYERS - TRIAL GAMES**

A player under suspension for a number of competition fixtures shall not be permitted to play in trial games without the specific sanction of the Executive Management and the payment of a good behaviour surety as determined by the Executive Management which may be forfeited at the discretion of the Executive Management

#### 6.12 **MATCH CAUTIONS - PREMIERSHIP SERIES**

(a) A player shall be cautioned for the following offences as prescribed for in the laws of the game;

Y1 The player is guilty of unsporting behaviour

Y2 The player shows dissent by word or action

Y3 The player persistently infringes the Laws of the Game

Y4 The player delays the restart of play

Y5 The player fails to respect the required distance when play is restarted with a corner kick, free kick or throw-in

Y6 The player enters or re-enters the field of play without the referee's permission

Y7 The player deliberately leaves the field of play without the referee's permission

- (b) A player shall be cautioned during the course of a MWFA Match for any offence under the Laws of Association Football which is deemed necessary by the Referee.
- (c) The Referee may reprimand a player during the course of play, without the showing of a yellow card.
- (d) An official booking (or caution) is administered by the Referee recording a player's name and number and the offence committed on MWFA Referees Report form at the conclusion of the match.

There shall be no appeal against the receiving of a caution from the Referee.

- (e) After an individual player has received four (4) official cautions, the player shall serve a one (1) fixture suspension. The suspension shall be served in the competition fixture following receipt of the fourth (4th) caution. There shall be no appeal against a one (1) fixture suspension after receiving four (4) official cautions, however, if the player receives his/her fourth (4th) caution in the Grade 20, Reserve Grade competitions he/she may play in a higher grade on that same day only, and the player shall serve the suspension in the competition fixture following receipt of the fourth (4th) official caution.
- (f) Any player who accumulates a further three (3) official cautions, making a total of seven (7) shall be suspended for a further two (2) fixtures. The player must serve the two (2) fixture suspension in the club's next two (2) competition fixtures following the match in which the seven (7) official cautions were received.
- (g) Any player who accumulates more than seven (7) official cautions in any one season shall be called to appear before the Disciplinary Committee, who may apply further penalty, bond, fine or suspension for each official caution given to the player thereafter.
- (h) Premiership cautions shall not carry over from season to season. The termination of a premiership season shall be at the conclusion of the last premiership fixture of the season before the final series.
- (i) Any player who is dismissed from the field upon being cautioned for a second yellow card offence, the initial yellow card during that game shall NOT be taken into account for the purpose of the accumulation of cautions for the application of suspension in accordance with Regulation and 6.12 (H).

- (j) Any club who is found to have played a player who should have been stood down because of any breach of Regulations 6.12 may be fined the amount of \$500.00 and the match may be awarded to the opponents with the score line reading three goals to nil (3-0).

#### 6.12 (1) FINAL SERIES CAUTIONS

Any player receiving two (2) cautions in the final series shall automatically stand down the next fixture. If the player's team/ club has completed its final series commitments the player shall stand down the first competition game in the following season.

#### 6.13 FINDINGS OF THE DISCIPLINARY COMMITTEE

The Committee has the power to:

- (a) Consider the reports of Referees, assistant referees and others.
- (b) Decide if the offence is proved.
- (c) Determine and set whatever punishments or sanctions that it considers appropriate in accordance with the guidelines.

#### 6.14 PUNISHMENT

If the Disciplinary Committee considers that the offence is proved it must select the punishment from the following guidelines. The Disciplinary Committee is not empowered to set punishments outside these guidelines. Suspensions are calculated in fixtures or a time frame.

6.15 The Disciplinary Committee has the right to consider:

- (a) the severity of the offence
- (b) the player's past record
- (c) extenuating circumstances

#### 6.16 PENALTIES

The Disciplinary Committee shall impose penalties within the following guidelines:

##### **SECTION 'A' - Offences by players against other players or any other person Sending-Off Offences (In accordance with the guidelines of FIFA Law 12)**

<b>Offence Codes</b>	<b>Minimum</b>	<b>Maximum</b>
(a) R1 – Serious foul play	2 Fixtures	12 Fixtures
R1 Expanded		
(a) Violent Tackle from behind that endangers the safety of an opponent	3 Fixtures	10 Fixtures



(b) (i) Rugby Tackle	2 Fixtures	8 Fixtures
(ii) Violent Charging	2 Fixtures	8 Fixtures
(iii) Over the Ball Tackle	2 Fixtures	12 Fixtures
(b) R2 Violent conduct	2 Fixtures	24 Months
R2 Expanded		
(a) (i) Head Butting	5 Fixtures	24 Months
(ii) Punching/Fighting	2 Fixtures	8 Fixtures
(iii) Kicking	2 Fixtures	12 Fixtures
(b) Elbowing	2 Fixtures	16 Fixtures
R2 (b) Expanded		
(i) Elbowing to the Head	4 Fixtures	16 Fixtures
(ii) Elbowing to the Body	2 Fixtures	10 Fixtures
(c) R3 - Spitting	8 Fixtures	1 Year
(d) R4 - Sabotaging an obvious goal scoring opportunity (handball)	1 Fixture	4 Fixtures
(e) R5 - Sabotaging an obvious goal scoring opportunity (holding) (tripping) (impeding)	1 Fixture	6 Fixtures
(f) R6 Using Offensive, Insulting or Abusive Language	2 Fixtures	8 Fixtures
R6 (a) Making offensive, insulting or abusive gestures	4 Fixtures	20 Fixtures
R6 (a) Expanded		
(a) (i) Indecent Actions	4 Fixtures	20 Fixtures
(g) R7 - Second Caution		1 Fixture

*Note: Section 'A' applies also for "Offences by players and team officials against match officials after having been sent from the field" and dealt with by a General Purpose Tribunal.*

## **SECTION 'B' - Offences by players and team officials against match officials**

Note: Players includes named substitutes. Team officials comprise coaches, managers, trainers, and any other person permitted in the Technical Area.

Offence Codes	Minimum	Maximum
(h) R2 Threatening or intimidating a referee or assistant referee by word or action	12 Fixtures	Life
(i) Tripping a referee or assistant referee	1 Year	Life
(ii) Pushing with an open hand, or shoulder, hip	1 Year	Life
(iii) Striking with the ball or other object	1 Year	Life
(iv) Punching, Kicking or elbowing	Life	Life
(i) R3 Spitting	8 Fixtures	Life
(j) R6 Uses offensive, insulting or abusive language.	3 Fixtures	12 Fixtures
(i) Making offensive, insulting or abusive gestures.	4 Fixtures	20 Fixtures

Note: Section 'B' applies also for "Offences by players and team officials against match officials after having been sent from the field" and dealt with by a General Purpose Tribunal.

#### **SECTION 'C' - Other offences by players and team officials**

(k) Inciting the crowd	10 Fixtures	6 Years
(l) Attacking or fighting with spectators	1 Year	Life
(m) Bringing the game into disrepute	6 Fixtures	Life
(n) Deliberately misleading the Disciplinary Committee	10 Fixtures	2 Years
(o) Spitting at or onto spectators	8 Fixtures	Life

*Note: Players includes named substitutes. Team officials comprise coaches, managers, trainers, and any other person permitted in the Technical Area.*

#### **6.17 TEAM OFFICIALS – MANDATORY MATCH SUSPENSION**

A referee may take action against a Team Official who fails to conduct themselves in a responsible manner and may expel the Team Official from the field of play and its surroundings, including the technical area.

A Team Official who has been expelled from the field of play or technical area by a referee must serve a mandatory one (1) fixture suspension.

The club of any Team Official that is found to have entered either the field of play or technical area whilst suspended may be fined up to \$250.00.

#### **6.18 ABANDONED MATCHES, CAUTIONS AND SEND OFFS**

A yellow card issued during an abandoned match will be annulled if that match is replayed and upheld if that match is not replayed

A red card issued during an abandoned match will be upheld, regardless of whether the match is replayed or not.

#### **6.19 FINES & BONDS**

The Disciplinary Committee is also empowered to additionally fine a Professional player or place an Amateur or Professional player on a bond.

#### **6.20 PERSISTENT OFFENDERS**

In cases of repetition, that is, if the same player during the same season is reported for other offences, even if the infraction is not of the same nature, more severe sanctions may be taken.

#### **6.21 VIOLENCE**

All cases of violence will be severely punished.

#### **6.22 UNABLE TO DETERMINE OFFENCE**

Should the Disciplinary Committee be unable to decide what category a particular offence falls under, the Chief Executive Officer of the MWFA shall decide.

#### **6.23 USE OF VIDEO EVIDENCE**

The admissibility and weight to be given to evidence including electronic, audio, visual material ie: video, DVD recordings in the proceedings shall be at the discretion of the commission/tribunal.

Visual aids (video, films, etc) to support or question a referee's report regarding an offence punishable by expulsion can be used only to verify the player's identity.

- (a) Audio visual evidence is to be used solely as additional proof in disciplinary cases.
- (b) Decisions of fact made by referees are final and not subject to appeal and shall not be modified on the basis of video recordings (e.g. offside, penalty, goals, etc.).

- (c) Decisions must be based principally on the reports of the referee and assistant referees, as well as those of the commissioner, referee inspector and other officials.
- (d) Video recordings shall not be used as a means of restricting the authority and decisionary power of the referee, but only as the most accurate way of investigating the truth when disciplinary action is required. Such film evidence may also be referred to, if further sanctions are to be imposed on the guilty player.

#### **6.24 APPEALS**

All appeals to a determination of the Disciplinary Tribunal are to be made to the Appeals Tribunal.

Appeals against a determination of the Disciplinary Committee must be lodged within 48 hours of the decision or finding being notified to the appellant.

#### **6.25 ADDITIONAL SANCTIONS ABOVE THE RECOMMENDED RANGE**

In exceptional circumstances, the Disciplinary Committee may impose a sanction greater than the range of suspension as detailed in these regulations.

#### **6.26 APPLICATION OF FIXTURE V TIME SUSPENSIONS**

Suspensions in terms of fixtures apply only to the style of football in which they were received (either 11 – a – side or Futsal).

Suspensions in terms of time (eg: months) apply to all types of football (both 11 – a – side and Futsal).



## JUDICIARY PROCESS

In principal the Judiciary will follow the same principals as Football NSW. In brief it will be as follows:

1. The send off report/citation is received by the MWFA Judiciary Secretary by Tuesday 5pm following the previous weekend's matches.
2. A list of send-offs/citations received by the Judiciary Secretary will be sent to the Clubs on Tuesday by 5pm to inform them what send-offs have been received. This will give the Clubs to opportunity to dispute a mistaken identity prior to their next game.
3. The Judiciary will meet on Thursday night and read through the send-off/citation reports. The judiciary will determine the sentence to be handed down or request the person to appear at the next judiciary meeting. This is based solely on the referee's written report or any other report accepted by the judiciary.
4. The notification of the sentence will then be sent to the Club on the Friday after the Judiciary has met.
5. The player will have the option to accept the sentence or attend judiciary the following Thursday. Notification of the players wanting to attend judiciary must be received by Monday 5pm by the Judiciary Secretary.
6. The player must stand down from the following match as the mandatory one week sentence will be enforced. Those suspended must stand down the next game regardless of the competition they may be playing.
7. All appeals from the determination of the Judiciary by a player appearing at the judiciary meeting will be heard by the MWFA Appeals Committee.
8. All appeals of the MWFA Appeals Committee will be heard by Sydney Branch.
9. The Judiciary will be able to determine if more information is required from the Referee to supplement their report OR whether the referee is required to attend the Judiciary hearing the following week.
10. The referee's are to vet the send-off reports prior to the Judiciary on the Thursday night.

## **JUDICIARY NIGHT HEARING**

1. The book can be signed from 7pm onwards.
2. Players/Officials will be seen in order of signing however Junior players will be heard first.
3. Judiciary will commence at 7.30pm.
4. The tape is started.
5. The player/official is advised that the proceedings are being taped.
6. The Chair will confirm that the player/official has been given a copy of the send-off reports/s and he or she is aware of what he/she has been charged with, the sentence imposed and and that the players ID Card is in the possession of the Judiciary.
7. The player/official is asked for their comments on the sentence.
8. Do they have any further evidence for the Judiciary?
9. Judiciary members are then allowed to ask questions of the player.
10. Witnesses are called for and the same process is followed.
11. The player/official is asked as to whether they have any further evidence to provide to the Judiciary.
12. The past record of the player/official can be used in sentencing, the player/official is shown his/her previous record to see if it is correct.
13. The player/official of the Clubs will be advised of the result of the hearing on Friday morning.
14. They are advised that they have the right of appeal.
15. Judiciary Secretary is to fill in charge book.
  - White copy goes to player/official
  - Pink copy goes to the club
  - Yellow copy is kept on record at the MWSA Office.
16. The Judiciary Secretary is to complete the Judiciary Summary report.

17. The Judiciary Secretary will write the sentence received by the player on the back of their ID Card.

**Case Over**

1. The Judiciary Secretary is to update details of the sentences onto the system on Monday.
2. The Judiciary Secretary is to ensure all records of the Judiciary are kept in order.



# Manly Warringah Football Referees Association Inc.

## **SEND-OFF REPORT**

SOS NUMBER

Obtain from KEVIN MARTIN on 99821548

Deliver to MWFA Clubhouse, or post to: MWFA Inc. P.O. Box 455 Narrabeen 2101  
 (MWFA must have electronic version of Report by Monday 1pm) email to: [judiciary@mwfa.com.au](mailto:judiciary@mwfa.com.au) Revised form 25/11/08

<b>MATCH</b>		<u>Send Off Codes</u> R1 - Is guilty of serious foul play R2 - Is guilty of violent conduct R3 - Spits at an opponent R4 - Denies the opposing team a goal or obvious goal scoring opportunity by deliberately handling the ball (does not apply to Goalkeeper in their own area) R5 - Denies an obvious goal scoring opportunity to an opponent moving towards the players goal by an offence punishable by a free kick or penalty kick R6 - Use offensive or insulting language and/or gesture R7 - Receives a second caution in the same match
<input style="width: 150px; height: 20px;" type="text"/> V <input style="width: 150px; height: 20px;" type="text"/>		
Competition <input style="width: 100px; height: 20px; text-align: center; border: 1px solid black;" type="text" value="MWFA"/>	Grade <input style="width: 80px; height: 20px;" type="text"/>	
Division <input style="width: 50px; height: 20px;" type="text"/>		
Ground <input style="width: 150px; height: 20px;" type="text"/>	Date <input style="width: 80px; height: 20px;" type="text"/>	K.O. <input style="width: 50px; height: 20px;" type="text"/>
<b>PLAYER</b>		<b>FACTS</b>
Surname <input style="width: 150px; height: 20px;" type="text"/>	Minute of the Game: <input style="width: 80px; height: 20px;" type="text"/>	
Initial: <input style="width: 60px; height: 20px;" type="text"/>	Game score at time of incident <input style="width: 80px; height: 20px;" type="text"/>	
Team: <input style="width: 150px; height: 20px;" type="text"/>	Send off Code <input style="width: 80px; height: 20px;" type="text"/>	
Shirt No: <input style="width: 60px; height: 20px;" type="text"/>		
I.D. No.: <input style="width: 100px; height: 20px;" type="text"/>		

**Description of incident (complete the sections below as fully as possible)**

Referees position, distance from incident, and view of incident:

Lead up to incident:

Incident:

Offensive, insulting or abusive language used (where applicable):

Attitude of player before, during and after incident:

Method game was restarted:

Assistant Referee's position:

<b>REFEREE:</b>	<b>ASSISTANT REFEREE:</b>
I was the <input style="width: 40px; height: 20px;" type="text"/> REFEREE	AR1 <input style="width: 40px; height: 20px;" type="text"/> AR2 <input style="width: 40px; height: 20px;" type="text"/>
Signed: <input style="width: 150px; height: 20px;" type="text"/>	Name (print): <input style="width: 150px; height: 20px;" type="text"/>
Branch: <input style="width: 150px; height: 20px; text-align: center; border: 1px solid black;" type="text" value="MWFRA"/>	Reg'd No: <input style="width: 150px; height: 20px;" type="text"/>

<b>Admin only:</b>	<b>Outcome:</b>	suspended <input style="width: 40px; height: 20px;" type="text"/> weeks.	Time period: <input style="width: 40px; height: 20px;" type="text"/>
Judiciary date: <input style="width: 100px; height: 20px;" type="text"/>	sentence <input style="width: 40px; height: 20px;" type="text"/> weeks.	sentence <input style="width: 40px; height: 20px;" type="text"/> weeks.	



# INCIDENT REPORT

## Manly Warringah Football Referees Association Inc.

SOS NUMBER

Obtain from KEVIN MARTIN on 99821548

Deliver to MWFA Clubhouse, or post to: MWFA Inc. P.O. Box 455 Narrabeen 2101  
(MWFA must have electronic version of Report by Monday 1pm) email to: judiciary@mwfa.com.au

### MATCH INFORMATION

..... Vs .....

Division: ..... Grade: .....

Played at ..... Date ..... Kick off .....

Score at time of Incident:.....

I was REFEREE/ASSISTANT REFEREE at the above match and have to report that:

Regards,

NAME: \_\_\_\_\_ (Please print)

SIGNATURE: \_\_\_\_\_

**Manly Warringah Football Referees Association Inc.**

**Summary of Send off Categories**

No.	Offence / Category	1	2	3	4
<b>Serious Foul Play</b>					
R1	<b>Elbowing</b>	Uses elbow in frustration / Retaliation (e.g. for shirt pulling)	Strikes player using elbow in contest for the ball	Uses elbow to strike/injure player, may come in from distance	Uses elbow on Official / Spectator or very serious incident involving player
	<b>Kicking / Kneeing</b>	Kicks / Knees in frustration / retaliation (lashes out)	Kicks / Knees in contest for the ball	Kicks/ Knees to strike / injure player, may come in from distance	Kick/ Knees official/spectator or very serious incident involving a player
	<b>Striking or attempting to strike</b>	Strikes (with hand)in frustration/retaliation	Strikes (with hand) in contest for the ball	Strikes (with hand) to injure, may come in from distance	Strikes Officials / Spectator, or very serious incident involving player
	<b>Head Butting</b>	Uses head to strike in frustration/retaliation	Uses head to strike player whilst contesting the ball	Uses head to injure, may come from distance	Uses head to strike official/spectator or very serious incident involving a player
	<b>Over the Ball Tackle</b>	No Grade 1	In contest for the ball	Tackle to injure , may come from distance	Very serious incident involving a player
	<b>Violent Tackle From Behind</b>	Badly timed tackle	Two footed tackle from behind	Leg-breaking tackle (contact around opponents knee, for e.g.)	Very Serious
	<b>Throwing Ball</b>	Throws a ball at a player in frustration	Throws a ball and hits a player	Strikes player with a ball and deliberately attempts to injure	Throws ball at official/spectator
<b>Violent Conduct</b>					
R2	<b>Elbowing</b>	Uses Elbow in frustration/retaliation (e.g. for shirt pulling)	Strikes player using elbow to stop progress/off the ball	Uses elbow to strike/ injure player, may come in from distance	Uses elbow on Officials / Spectator, or very serious incident involving player
	<b>Kicking / Kneeing</b>	Kicks / Knees in frustration / retaliation (lashes out)	Kicks / Knees player to stop progress / off the ball	Kicks/ Knees to strike / injure player, may come in from distance	Kick/ Knees official/spectator or very serious incident involving a player
	<b>Striking or Attempting to Strike</b>	Strikes (with hand)in frustration/retaliation	Strikes (with hand) to stop progress off the ball	Strikes (with hand) to injure, may come in from distance	Strikes Officials / Spectator, or very serious incident involving player
	<b>Head Butting</b>	Uses head to strike in frustration/retaliation	Uses head ) to stop progress off the ball	Uses head to injure, may come from distance	Uses head to strike official/spectator or very serious incident involving a player
	<b>Throwing Ball</b>	Throws the ball at a player in frustration	Throws the ball and hits a player	Strikes player with a ball and deliberately attempts to injure	Throws ball at official/spectator
	<b>Spitting</b>	Spits at player (but misses)	Spits on Player	Spits in players face	Spits at or on official/spectator
	<b>Wrestling an opponent to the ground</b>	Wrestles out off frustration/retaliation	Wrestles to stop player progress/fight for ball	Comes from distance to wrestle a player	Wrestles with an official/spectator, or very serious incident involving player
	<b>Denying a goal scoring opportunity</b>	All Grade 1	All Grade 1	All Grade 1	All Grade 1
	<b>Making Obscene gestures</b>	Frustration gestures or a Gesture that was provoked by a tackle or the like	Unprovoked gesture directed at another player or at the crowd	Unprovoked gestures directed at the referee or Assistant Referee	Unprovoked Racially based gestures directed at a player. an official or the crowd
	<b>Offensive, insulting or abusive Language</b>	Frustration swearing or swearing that was provoked by a tackle or the like	Unprovoked swearing directed at another player or at the crowd	Unprovoked swearing directed at the referee or Assistant Referee	Unprovoked Racially based gestures directed at a player, an official or the crowd
	<b>Second Caution in same match</b>	All Grade 1	All Grade 1	All Grade 1	All Grade 1
	<b>Bringing the game into disrepute</b>	Refer Judiciary – Category 4			
	<b>Send off not previously specified</b>	Refer Judiciary – Category 4			
	<b>Infringement against referees</b>	Refer Judiciary – Category 4			

# MWFA Protest & Disputes Committee – Protest Form



**MANLY WARRINGAH**  
FOOTBALL ASSOCIATION

## Game Details

Home Team	vs.	Away Team
Age Group		
Division		
Venue		
Date/Time Game Commenced		
Date/Time Game Completed		

### Preliminary Game Result:

Home Team		Away Team	

Protest by (Club)

## Protest Details

<b>MWFA Playing Rule</b>	
--------------------------	--

(Please indicate which MWFA Playing Rule is alleged to have been breached)

<b>Time Incident Occurred</b>				
<b>Score When Incident Occurred</b>	<b>Home</b>		<b>Away</b>	

## Full Incident Details

If the Protest is claiming an "Error in Law", please also provide full particulars stating how the error at Law substantially and irrevocably altered the result of the match.

**MWFA USE ONLY:**

Received Within 48 hours	Yes
Card correctly marked "STA"	Yes
Protest claiming "Error in Law"	Yes
Fee Applicable	Yes
If Applicable - Fee Received	N/A
Copy Sent to Opposition	Yes
Copy Sent to MWFA	No
All Criteria Fulfilled	Yes

**Opposition Response**

**MWFA Report**

**P&D Committee Finding**

**Final Game Result**

--	--	--	--

Signed On Behalf of  
MWFA Protests & Disputes Committee

David Broughton  
Chairman